

QUICK START STEPS

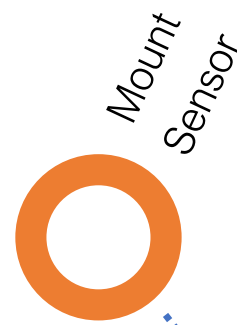


Login to Server Console.
Register new device using the DevEUI, AppEUI and AppKEY. This can be found on the label on the device.
Select OTAA for joining the network.



Run the node activation app on an android device. Click on the ACTIVATE DEVICE button and wait for the response. Once the node activates, the node device EUI will be shown in the list in the app.

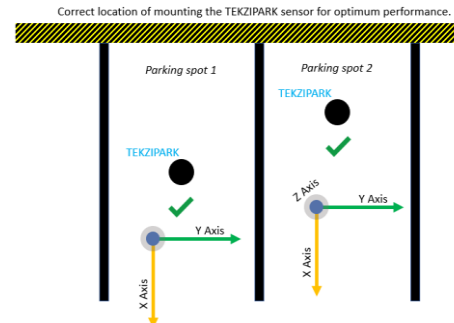
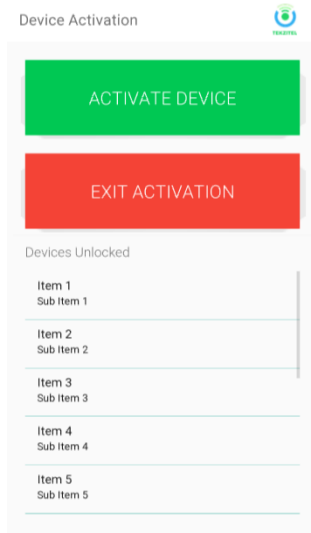
Please refer to slide 2 for the detailed process flow.



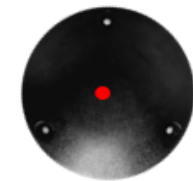
Select your desired location.
Bolt down the device with the bolts provided OR drill a hole in the ground for flush version.



Place a strong magnet over the device at the location shown by the red spot for 11 seconds.
Wait for the reset message to appear in the console messages screen.
The device then goes into bootloader mode for 2 minutes. Post this it will advertise its ID for and then send its first Vacant message with downlink.
Device is now operational.



SURFACE VERSION 1

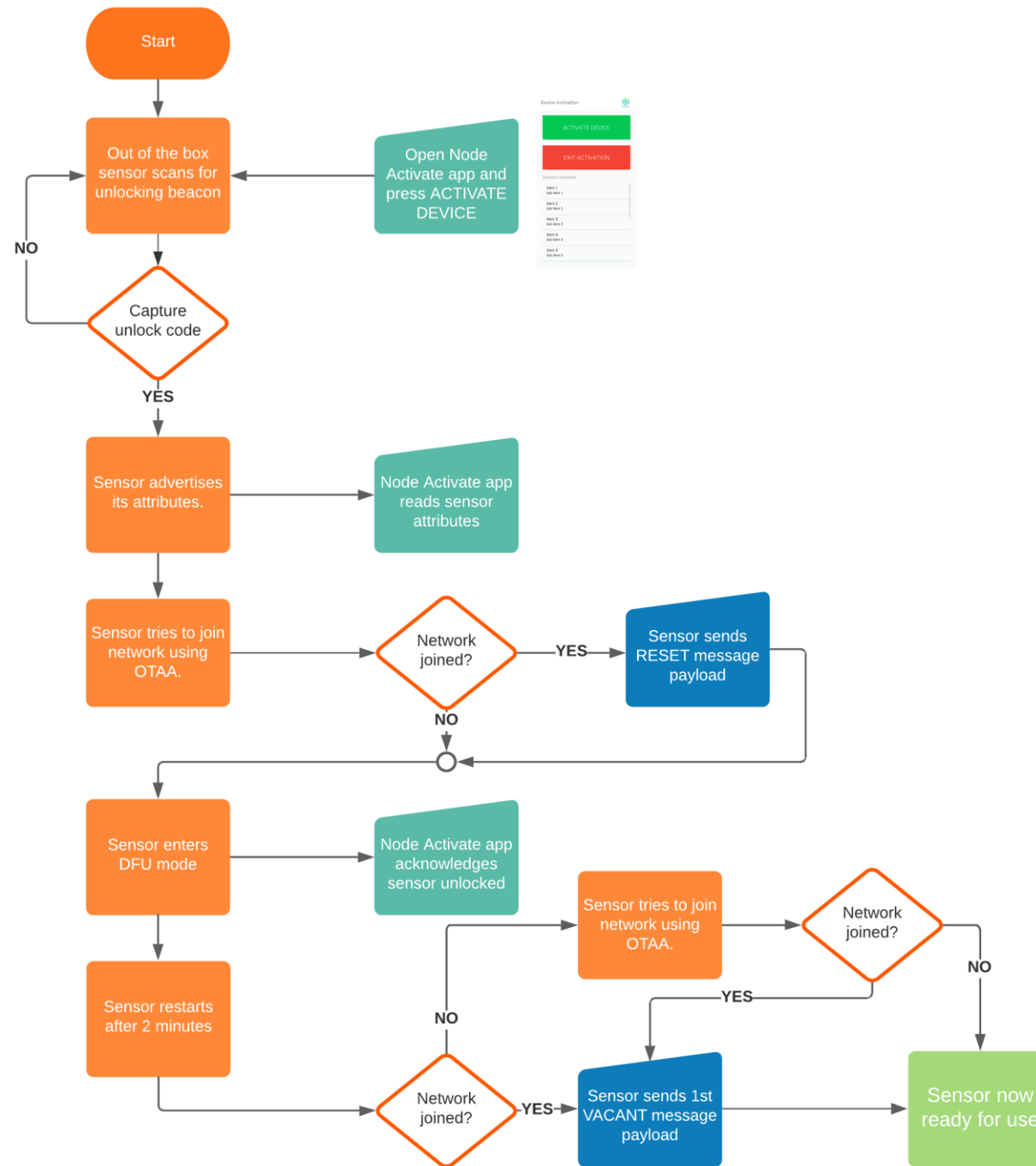


SURFACE VERSION 2



FLUSH VERSION

UNLOCKING FLOW



MAGNETIC RESET FLOW

