



TEKZIPARK OTA FIRMWARE UPGRADE

Abstract

This document details the steps to upload new firmware to the device over the air (OTA).

TEKZIPARK Terms of Usage

The device is designed to be used for detecting parking space occupancy states. This product is not intended for incorporation into finished appliances that are made commercially available as single functional units to end users.

This product uses the WISOL Sigfox module which is SIGFOX verified.

Stresses exceeding those listed in the Maximum Ratings table may damage the device. If any of these limits are exceeded, device functionality should not be assumed, damage may occur and reliability may be affected.

Exposure to absolute maximum rating conditions for extended periods may affect device reliability.

Contents

- 1. APPLICABILITY 3
- 2. FIRMWARE UPGRADE OTA 3
- 3. OTA procedure 3
- 4. ADDITIONAL INFORMATION 5

1. APPLICABILITY

This guide is applicable for TEKZIPARK model # **TEKZ-SIG-X1-PKFLS** and **TEKZ-SIG-X1-PKSUF**

(!)X is the operating zone

X=1-> RCZ1 868Mhz

X=2-> RCZ2 902Mhz

X=3-> RCZ3 923Mhz

X=4-> RCZ4 920Mhz

2. FIRMWARE UPGRADE OTA

The TEKZIPARK NODE has built-in capability to upgrade its firmware over-the-air. This capability avoids the hassles of unmounting the device from the ground to upgrade its firmware and the associated time and efforts spent re-mounting the device.

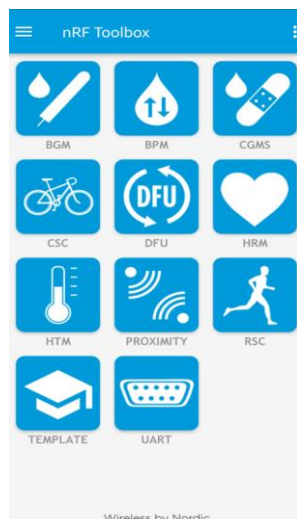
Follow the steps below carefully to have an efficient and hassle-free exercise to upgrade new firmware.

3. OTA procedure

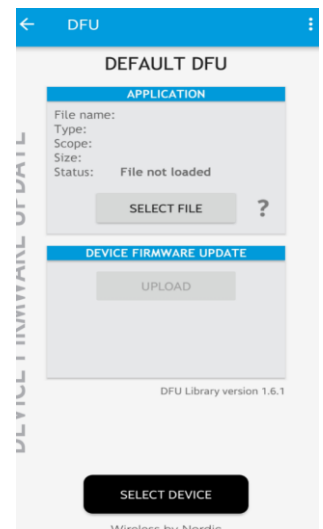
- i) Download the 'NRF toolbox' application from Google Playstore and install it.
- ii) Download the application zip file into a folder on the device.

iii) Open NRF toolbox on the device and click 'DFU'.

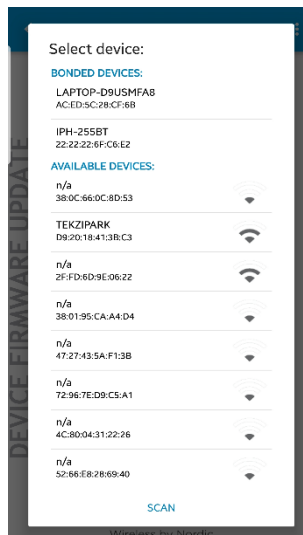
iv) Perform a magnetic reset of the device.



v) Click 'Select Device'.



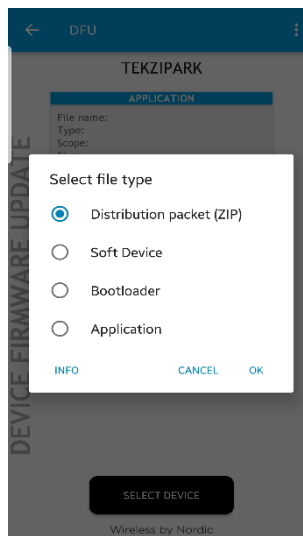
vi) Select 'TEKZIPARK'.



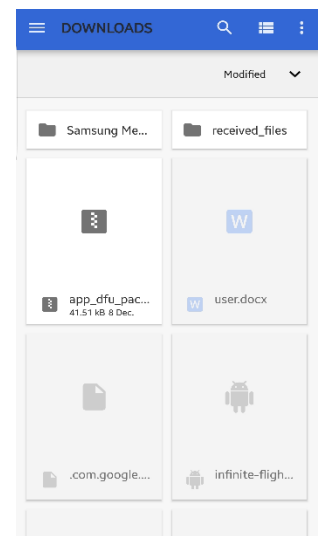
vii) Click 'Select File'.



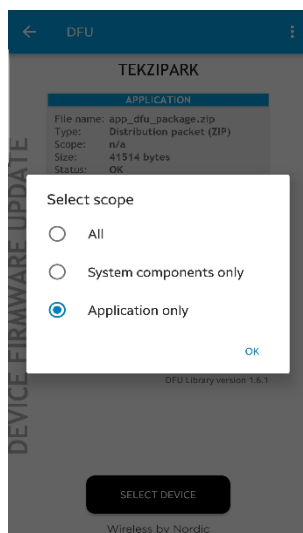
viii) Click 'OK'.



ix) Select the zip file downloaded in the device.

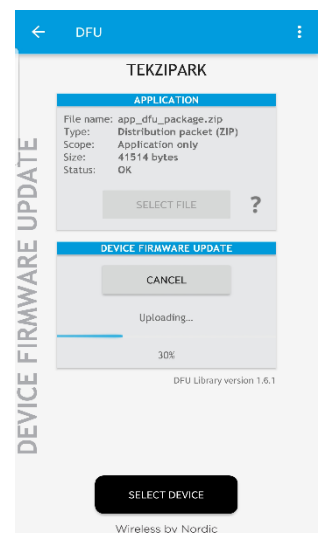


x) Select 'Application Only' and click 'OK'.



xi) Click 'Upload'.

Firmware upload starts. Once the firmware is uploaded, the device will start normal operation.



4. ADDITIONAL INFORMATION

The device is open for a firmware upgrade ONLY after a magnetic reset is performed on the device.

The maximum time limit for which the device is able to accept a new firmware is 5 minutes after a magnetic reset is done. So, if a new firmware needs to be uploaded, the above activity has to be done within 5 minutes after a magnetic reset.

Since the device will wait for a firmware update after a magnetic reset, if no firmware upgrade is required, the 5-minute window still has to pass after which the device will begin normal operation.

IMPORTANT NOTICE – PLEASE READ CAREFULLY

TEKZITEL PTY LTD reserve the right to make changes, corrections, enhancements, modifications, and improvements to TEKZITEL products and/or to this document at any time without notice. Purchasers should obtain the latest relevant information on TEKZITEL products before placing orders. TEKZITEL products are sold pursuant to TEKZITEL terms and conditions of sale in place at the time of order acknowledgement. No license, express or implied, to any intellectual property right is granted by TEKZITEL herein. Resale of TEKZITEL products with provisions different from the information set forth herein shall void any warranty granted by TEKZITEL for such product. Information in this document supersedes and replaces information previously supplied in any prior versions of this document.