



TEKZIPARK MAGNETIC RESET

Abstract

This document details the steps to perform a magnetic reset.

TEKZIPARK Terms of Usage

The device is designed to be used for detecting parking space occupancy states. This product is not intended for incorporation into finished appliances that are made commercially available as single functional units to end users.

This product uses the WISOL Sigfox module which is SIGFOX verified.

Stresses exceeding those listed in the Maximum Ratings table may damage the device. If any of these limits are exceeded, device functionality should not be assumed, damage may occur and reliability may be affected.

Exposure to absolute maximum rating conditions for extended periods may affect device reliability.



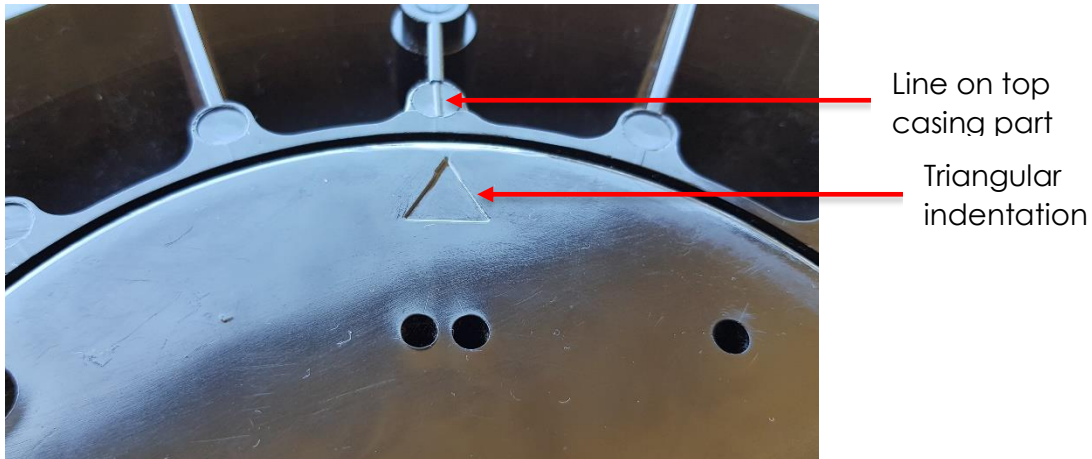
Contents

- 1. What is a magnetic reset? 3
- 2. Why is a magnetic reset required? 4
- 3. What happens when a magnetic reset is done? 4

1. What is a magnetic reset?

A magnetic reset is where the device is restarted from an initial state by placing a strong magnet on top of the device. The magnet must be on the device for a minimum of 5 seconds to ensure a reset state.

For an accurate placement location of the magnet on the device, please ensure that the bottom part of the casing is screwed into the top part as shown in the photo below.



The triangular indentation must align with the line on the top part. The magnet must be positioned on the device in the spot denoted by the orange circle.



2. Why is a magnetic reset required?

Magnetic reset is required if the following actions need to be performed.

- i) Installation of the device on the field. After the installation is done, a magnetic reset MUST be performed to ensure the device starts from an initial state.
- ii) Uploading new firmware to the device. The magnetic reset will ensure that the device is in firmware update mode as part of its restart cycle. The firmware update mode lasts for 5 minutes after which device starts normal operation.
- iii) Anytime a reset is required to restart the device from an initial state.

3. What happens when a magnetic reset is done?

When a magnetic reset is done the following sequence of actions are performed by the device.

- i) The device waits for 10 seconds and then sends a Sigfox transmission denoting a magnetic reset. Please refer to the payload definition for more details.
- ii) The device does a software reset.
- iii) The device enters firmware update mode. The device remains in this mode for 5 minutes. Any firmware update if required should be done during this period.
- iv) The device then exits firmware update mode and starts normal operation.